

# Greenville Safety Consultants Inc.: 'Your Complete Safety Solution'

Continually protecting workers' safety and clients' financial security and overall success

BY JUANITA WORTHY • CEO • GREENVILLE SAFETY CONSULTANTS

In the United States, 510 workers are injured every hour, eroding 104 million production days.

Is your team ready for the significant Occupational Safety Health Administration (OSHA) regulatory challenges in 2019? Regulatory fines have risen to \$12,934 per serious and failure to abate, while willful and repeat violations have risen to \$129,336 per incident.

Your company cannot afford to be on OSHA's extreme violator list when Greenville Safety provides that needed synergistic, team-minded view in proactively wrangling your environment, health and safety (EHS) needs.

What is your company's EHS philosophy? Do you operate under the "Three C's - choice, chance or change?" Maybe you utilize the "Zero Incident Mindset" or the old adage, "Our team goes home the same way they came in."

A model EHS approach requires action to ensure results. Partnering with Greenville Safety provides you custom safety representation that is affordable and gives you the advantage of a third-party, professional, unbiased entity that will continually work with you on compliance, risk reduction, workforce training, equipment modification and management of safety at various levels.

Headquartered in Greenville, S.C., since 2013, Greenville Safety is no stranger to navigating large scale or finite safety projects. With over 30 years' expertise in partnering with companies in a multitude of industries and in

serving international sectors such as aerospace, automotive, industrial, utility, transportation and health care, Greenville Safety forges that rapport to complement your safety demands.

In October 2018, OSHA updated its National Emphasis Program (NEP) on Trenching and Excavation, calling for additional compliance and inspection programs. In 2019 it will be a major regulatory focus.

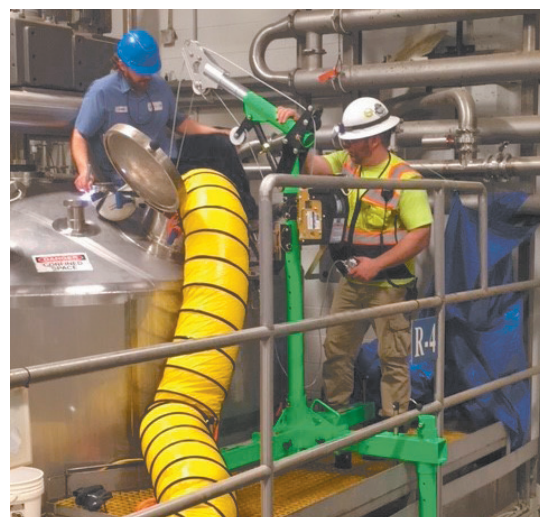
OSHA seeks to ensure that your firm is invoking solid prevention efforts and will validate that your employees are formally trained in addition to mandating that modern protection devices are in use. OSHA is expanding the compliance inspector roll and is actively adding to its workforce in 2019.

Avoiding these types of EHS pitfalls is vital for your employees' safety and your company's stability. Call upon Greenville Safety at 864-609-4320 or online at [www.greenvillesafety.com](http://www.greenvillesafety.com) to review your work landscape, validate areas of enhancement, implement quality driven training, engage field presence to diffuse risk and/or implement proactive confined-space management programs.

With the high costs of safety fines or down time, today's corporations cannot afford to be without ideal safety representation. Your business landscape needs knowledgeable, seasoned safety professional partners to combat the ever-changing work environment. Greenville Safety has the wealth of expertise to foster that support.



CEO, Juanita Worthy, CHST  
Board Member of Women in Manufacturing - Upstate SC



- OSHA
- MSHA
- DOT
- RCRA-EPA
- ATSSA

- Confined Space Entry Management
- Field Services: CM, PM & HSO
- Safety Equipment
- Training: E Learning & Custom Classroom

**"We partner with Greenville Safety in conjunction with our petrochemical customers, and look forward to strengthening our working relationship through active field presence and training that increases our employees' well-being and safety."**

**-Ward Vessel &  
Exchanger Field Service Group**

**"Great support during our shutdowns, we will continue to use Greenville Safety for future support"**

**- Haemonetics**

864-609-4320 / 143 Commons Way Greenville, SC 29611  
[www.greenvillesafety.com](http://www.greenvillesafety.com) / [www.shop.greenvillesafety.com](http://www.shop.greenvillesafety.com)